

2017 03 3F PT2 41FEET 23,10ML



Oil Pattern Distance: 41 Feet **Reverse Brush Drop:** 41 Feet **Oil Per Board:** 50 uL
Forward Oil Total: 1.25 mL **Reverse Oil Total:** 21.85 mL **Volume Oil Total:** 23.1 mL
Forward Boards Crossed: 25 Boards **Reverse Boards Crossed:** 437 Boards **Total Boards Crossed:** 462 Boards

	Start	Stop	Loads	Speed	Crossed	Start	End	Feet	T.Oil
1	8L	8R	1	14	25	0.0	0.0	0.0	1250
2	2L	2R	0	22	0	0.0	41.0	41.0	0

<< >> Forward Reverse More

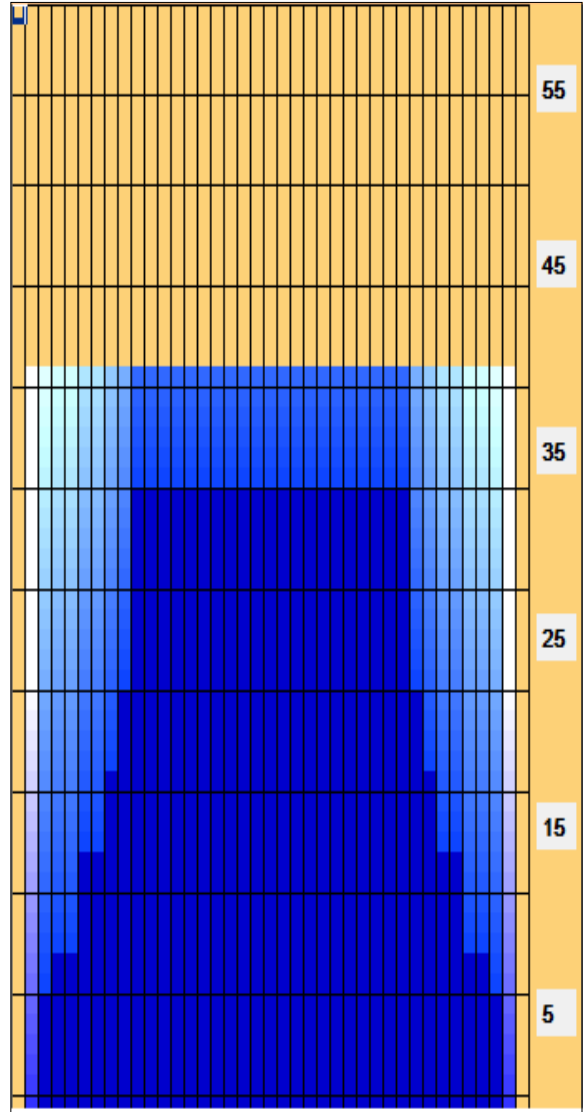
Conditioner:
 Type In or Select One
 TransferType:
 Type In or Select One

Forward

Reverse

Combined

Buff



	Start	Stop	Loads	Speed	Crossed	Start	End	Feet	T.Oil
1	2L	2R	0	22	0	41.0	35.0	-6.0	0
2	10L	10R	5	14	105	35.0	25.1	-9.9	5250
3	9L	9R	3	10	69	25.1	20.9	-4.2	3450
4	8L	8R	3	10	75	20.9	16.7	-4.2	3750
5	6L	6R	3	10	87	16.7	12.5	-4.2	4350
6	4L	4R	2	10	66	12.5	9.7	-2.8	3300
7	3L	3R	1	10	35	9.7	8.3	-1.4	1750
8	2L	2R	0	10	0	8.3	0.0	-8.3	0

<< >> Forward Reverse More

Item	3L-7L:18L-18R	8L-12L:18L-18R	13L-17L:18L-18R	18L-18R:17R-13R	18L-18R:12R-8R	18L-18R:7R-3R
Description	Outside Track:Middle	Middle Track:Middle	Inside Track:Middle	Middle: Inside Track	Middle:Middle Track	Middle:Outside Track
Track Zone Ratio	4.74	1.17	1	1	1.17	4.74

